

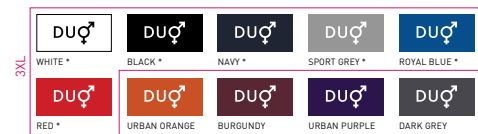
# B&C #E190 LSL /WOMEN - TW 08T



## REGULAR FIT

The modern long-sleeve T-shirt for women with contemporary look and the unchanged 190g fabric quality by B&C for 20 years.

Your #190bestchoice #longsleeve #women



\*COLOURS AVAILABLE IN 3XL

100% pre-shrunk ring-spun cotton

SPORT GREY: 85% PRE-SHRUNK RING-SPUN COTTON - 15% VISCOSE

Single Jersey

185 g/m<sup>2</sup>

XS - S - M - L - XL - 2XL - 3XL\*

10 pcs/pack & 50 pcs/carton

\* ONLY AVAILABLE IN WHITE, BLACK, NAVY, SPORT GREY, ROYAL BLUE AND RED



DUO  
CONCEPT

with B&C #E190 LSL

Want the same style/shape but in a lighter fabric?

TRY THE B&C #E150 LSL /WOMEN

Want the same style/shape but in short sleeve?

TRY THE B&C #E190 /WOMEN

### #Style / Fit

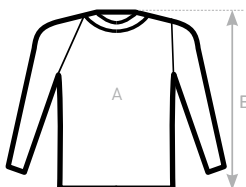
- Mainstream contemporary fit #allpurposes
- Side seams construction #feminineshape
- Thin collar rib to highlight modern neck opening #uptodate
- Body length allowing to be worn in and out #freedomofmovement
- Same 10 colours for men & women #perfectduo
- 7 sizes - XS to 3XL #fitsall
- Satin label #ultrasofttouch

### #Quality / Handfeel

- Made of 100% cotton #protectmyskin
- #Oeko-Tex100
- Resistant fabric and soft handfeel #ringspun
- Unchanged proven B&C quality fabric #20years
- Heavy weight fabric 190 gsm #whatevertheweather

### #Printability / Decoration

- Very smooth and even surface for bright and crisp printing results #details
- Tested and approved for all standard printing techniques applicable on cotton #beinspired
- Folded in box to ease the decoration process #makemylifeeasy



### SIZES [CM]

B&C #E190 LSL /WOMEN TW 08T	XS	S	M	L	XL	2XL	3XL
A HALF CHEST	41	44	47	50	53	56	59
B BODY LENGTH FROM NECK POINT	58	60	62	64	66	68	70



OEKO-TEX®  
CONFIDENCE IN TEXTILES  
STANDARD 100  
1501003 Centexbel  
Tested for harmful substances.  
www.oeko-tex.com/standard100